

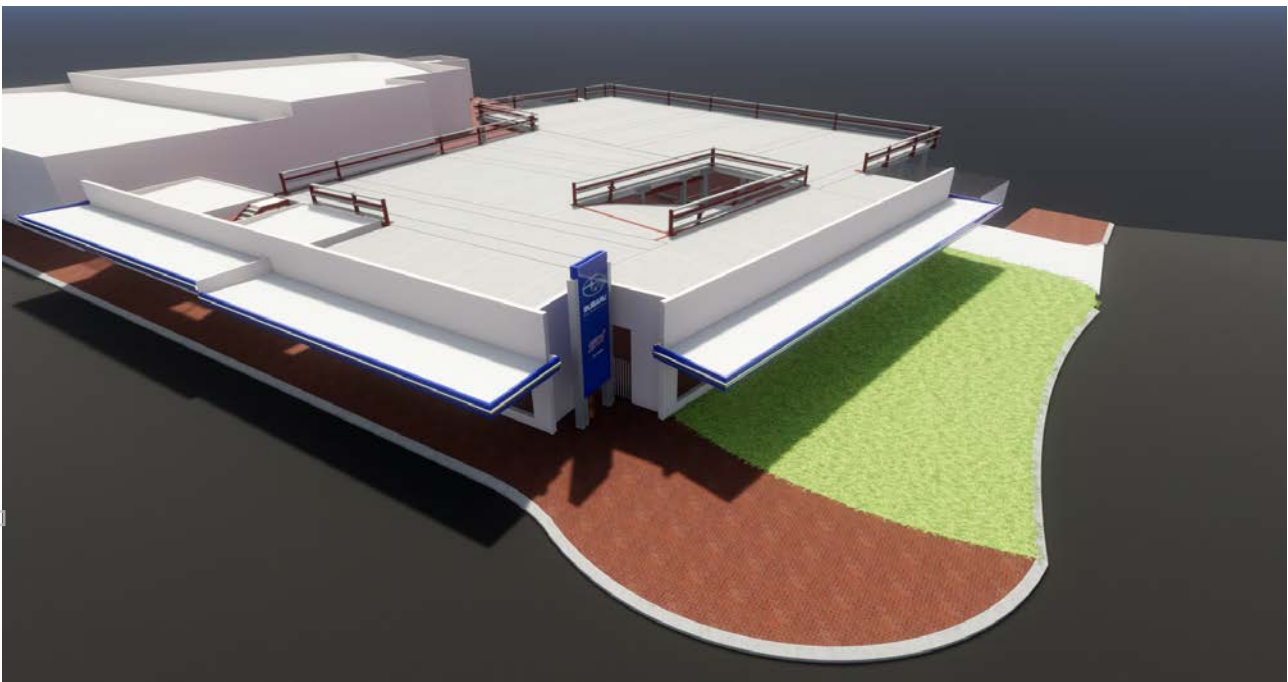
CITY SUBARU PROJECT UPDATE

Highlights:

- Top tier sub contractors and suppliers engaged for the Perth City Subaru project
- Companies contracted were also assessed for their ability to support projects nationally
- Manufacturing of key structural components underway to assist construction efficiency

Parkd Ltd (ASX:PKD), is pleased to announce it has engaged the project builder, Integria Construction and key sub-contractors and suppliers for the Perth City Subaru project.

The Perth City Subaru project is Parkd's first major build using the company's modular car parking system to create a 49 bay, single-level facility.



Render of Perth City Subaru

One of the most important criteria when selecting Integria Construction was their ability to work on future projects on a national basis.

Parkd MD Peter McUtchen commented "The appointment of quality construction partners is a crucial aspect to the successful delivery of our initial project. With these appointments now complete we are extremely excited to see the commencement of the construction phase."

Mr McUtchen also says “He was excited to announce that the process manufacturing of pre-fabricated concrete components had begun. This includes the casting of light weight slab panels and beams to fully assess the manufacturing process in preparation for scale production.

Once this process is complete, construction and assembly works on site will commence where the prefabricated elements will be craned into place and bolted together to complete this phase of the project.



Images showing casting of lightweight slab panels to assess the manufacturing process.

[ENDS]

For further information, please contact:

Michael Wills
Media and Investor Relations
Email: Michael@springsydney.com
Phone: 0468 385 208

ABOUT PARKD LTD

Parkd has intellectual property rights to aspects of an innovative lightweight concrete “modular” car parking system. The modular aspect of the system and minimising the structural weight provides the ability to relocate the car park or adapt it to parking demands by adding or subtracting to the structural levels of the car park.

The Parkd Car Park System is currently designed for single or multi rise arrangements for up to 6 levels including ground level. The Parkd Car Park System will be prefabricated offsite with the potential to reduce construction time and construction cost when compared to traditional methods.

For personal use only